

Hello — and thanks for taking a look at my work!

My name is Rich Kurz and I am an experienced graphics design professional. My philosophy has grown simpler through the years. Good design is not about me, but about us. I want to do good work that serves the needs of my client and that I am proud to put in my portfolio. This pdf shows some of my capabilities.

**Note that these concepts and original drawings are owned by myself.
The images in this document are my own and are under copyright to Rich Kurz.**

Our professors all maintained their freelance design practices outside of their teaching duties. It gave them the design outlet every designer needs for his creative juices, and it gave us students confidence that they knew what the real design world was like. It also gave them contacts with not-for-profit groups who could always use any good help they could get. We students got volunteered, which we were happy to do for a juicy project. So once a year we did one of those projects.

Star I was a light assembly shop for the physically and mentally handicapped. They did real work on real jobs for real pay. The jobs came in a contract basis. Keeping them continually employed was a big challenge. Our mission was to come up with salable ideas they could produce during the downtimes between contracts. The work had to be relatively simple and preferably use the equipment Star I had in-house.

My proposal was a chess set that, when not in use, could be mounted on the wall as a decorative piece. The board and the chess pieces would be cast plaster, the pieces made in rubber molds to ease removal. The pieces would be stored in a walnut-finished box. The board had a decorative design on the front and the squares on the back. Painting and finishing would be straight-forward, one-step operations.

Deliverables: Set of seven blueprints, 19" × 24", with color chips

I am available to discuss your design, illustration, marketing, and advertising needs. Let's talk!



Rich Kurz

CHESS SET

A WALL-DISPLAY CHESS SET, CONCEIVED AND DESIGNED FOR THE STAR I WORKSHOP, UTILIZING EXISTING CASTING AND WOODWORKING FACILITIES.

THE GOAL OF THE PROBLEM IS TO DEVELOPE AN INTERIM PRODUCT FOR MANUFACTURING DURING LULLS BETWEEN WORK CONTRACTS.

THIS PROJECT IS CONCEIVED TO BE A MEDIUM TO LOW VOLUME PRODUCTION ITEM TO SELL FOR A MODERATE TO HIGH PRICE. THE OBJECT OF THE DESIGN IS TO HAVE A DISPLAYABLE PRODUCT FOR THE HOME OR OFFICE SETTING.

procedure

CHESSPIECES TRAY

- 1- PREPARE MOLDS - SET UP THREE MOLD FRAMES AND INDENTATION FORMS ON VACUUM-FORM BED.
- 2- PREPARE PLASTIC - CUT 4'X8' SHEET OF 0.030" STYRENE INTO SIX 20"X30" SHEETS.
- 3- LOAD ONE 20"X30" SHEET INTO VACUUMFORM FRAME AND HEAT TO APPROPRIATE TEMPERATURE.
- 4- VACUUM FORM THE TRAYS.
- 5- CUT AWAY EACH TRAY. TRIM AWAY EXCESS PLASTIC. LIGHTLY SAND-FINISH TRIMMED EDGE.
CUT TOP NOTCH OUT
- 6- FINAL ASSEMBLY - MOUNT CHESS PIECES IN TRAY, FACE UP, INSERT TRAY INTO BOX WITH PIECES AGAINST THE FACE BOARD.

CHESSBOARD AND PIECES

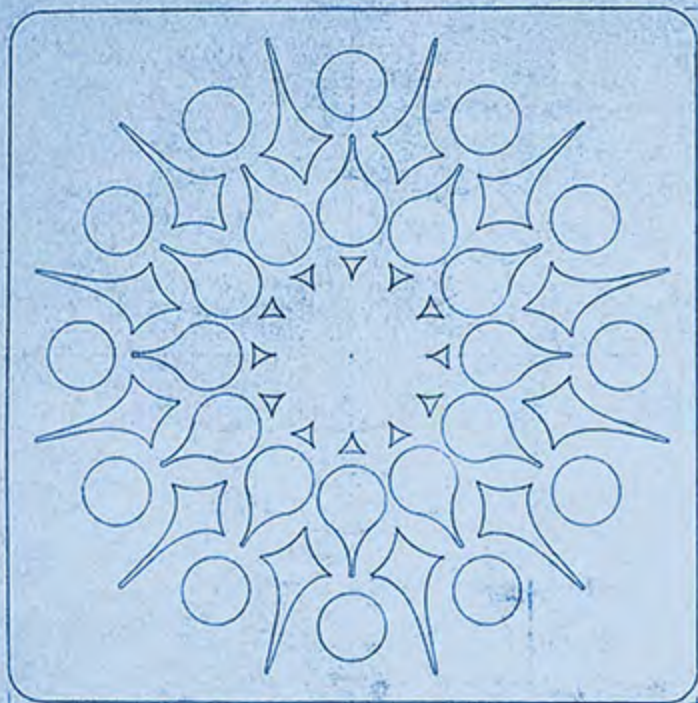
- 1- MAKE PATTERNS AND MOLDS.
- 2- CAST CHESS BOARD AND PIECES.
A- MIX HYDRICAL AND COLORING.
B- POUR MOLDS.
C- PLACE CHESSBOARD SQUARES MATRIX ON THE STILL SOFT PLASTER AND PUSH INTO THE PLASTER UNTIL THE JIG IS FLUSH WITH THE SURFACE, SCRAPPING IT FLUSH WITH THE PLASTER IF NEED BE.
D- REMOVE FROM MOLDS AND KILN DRY.
- 3- APPLY FINISH.
A- PRINT SECOND COLOR ON THE UPRISED SURFACES OF BOTH SIDES OF THE BOARD USING A HAND ROLLER.
B- SILVER ANTIQUE DYE SET OF CHESSMEN.

CHESSPIECE BOX

- 1- PREPARE PARTS.
A- CUT WOOD INTO PARTS.
B- DRILL HOLES, SAND SURFACES SMOOTH, RADIUS NECESSARY CORNERS (RADIUS CORNERS MAY REQUIRE AN OUTSIDE SOURCE TO CUT).
- 2- ASSEMBLE BOX USING TIGHTBOARD WOOD CEMENT.
- 3- APPLY FINISH.
A- DYE EXTERIOR SURFACES BLACK (USE A DYE RATHER THAN A STAIN FOR DEEPER PENETRATION).
B- GLUE VENEER ON FRONT FACE.
- 4- TRIM EXCESS VENEER AND LIGHTLY SAND VENEER EDGE FLUSH WITH THE BOX FACE EDGE.

PROBLEM STATEMENT
STAR I CENTER
08/17/74

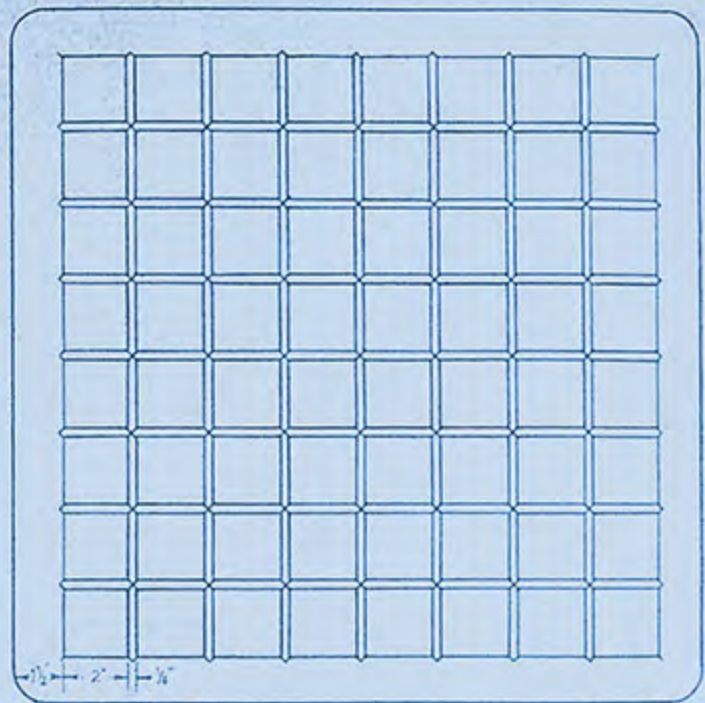




20 1/2"

20 1/2"

DISPLAY DESIGN



1 1/2" 2" 1/4"

1"

GRID DESIGN



1 1/2"

DISPLAY SECTION

MATERIAL - HYDRCAL
 COLOR - BROWN WITH RED OVERPRINT
 PROCESS - CASTING
 PRINTING



CHESS BOARD
 STAR & CENTER
 12/17/74 SCALE = 1/2" = 1"





QUEEN



KING



BISHOP



ROOK



KNIGHT



PAWN



KING/QUEEN



SECT. AA



B/R/KN/P



SECT. BB

MATERIAL - HYDROCAL

COLOR - SET 1 BROWN
 SET 2 ANTIQUE SILVER

PROCESS - CASTING

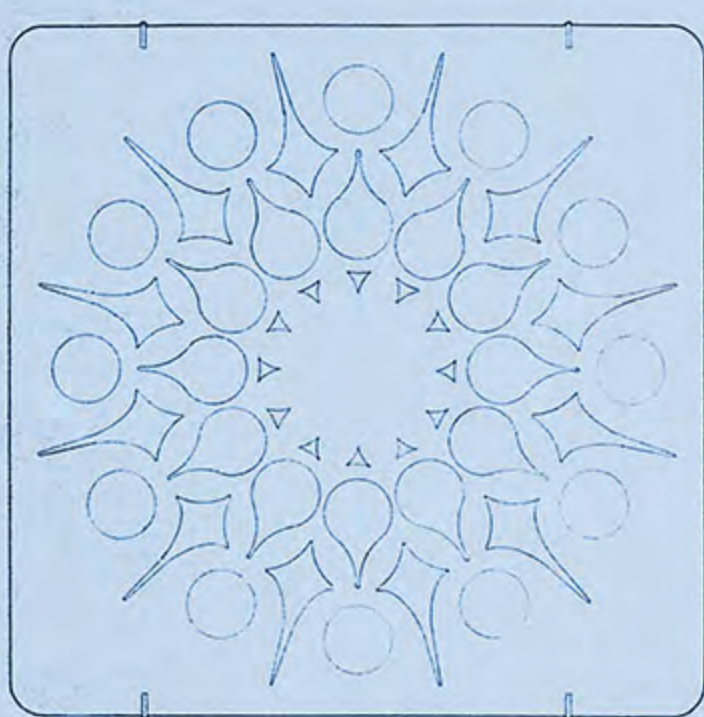
SILVER ANTIQUING - HAND APPLIED

- NOTES - NO PARTING LINE REQUIRED ON RUBBER MOLD.
 - FEATURE LINES INDICATE CENTER OF INDENTATION,
 SCRIBING WITH ROUNDED, CONVEX SHOULDERS.



CHESSE PIECE DESIGN
 STAR 1 CENTER
 08/17/74 SCALE - FULL





MATERIAL- 6 $\frac{1}{16}$ " PLASTIC SCREW ANCHORS
4 1" SQUARE BEND SCREW HOOKS
2 $\frac{1}{2}$ " SQUARE BEND SCREW HOOKS
(ALL SCREW HOOKS $\frac{1}{8}$ "¹⁹ THREADS)

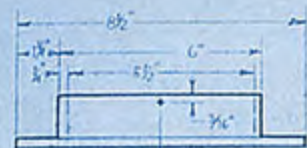
PROCESS- 1- LOCATE BOARD AT DESIRED HEIGHT ON WALL.
2- MARK AND DRILL HOLES FOR BOTTOM TWO 1" HOOKS, ABOUT 12" APART. INSERT ANCHORS AND HOOKS WITH HOOKS POINTING UPWARD.
3- REST BOARD ON HOOKS TO LOCATE TOP HOLES. MARK HOLES, REMOVE BOARD, DRILL HOLES, INSERT ANCHORS AND HOOKS WITH HOOKS POINTING UPWARD.

4- REST YARDSTICK ON TOP HOOKS. EXTEND A LINE ON BOTH SIDES.
5- POSITION CHESSPIECE BOXES AND MARK CENTER LINE ON YARDSTICK LINE.
6- LOCATE ONE $\frac{1}{2}$ " HOOK $\frac{1}{16}$ " DOWN FROM YARDSTICK LINE ON BOX CENTER LINE ON EACH SIDE OF CHESSBOARD.
7- DRILL HOLES AND INSERT ANCHORS AND HOOKS WITH HOOKS POINTING UPWARD.

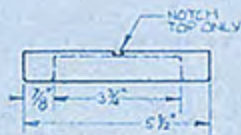
8- MOUNT CHESSPIECE BOXES, MOUNT CHESSBOARD ROTATING TOP TWO HOOKS DOWNWARD TO ACT AS RETAINERS.
9- VOILA!

MOUNTING INSTRUCTIONS
STAR IS CENTER
08/17/74 SCALE $\frac{1}{2}$ "=1"

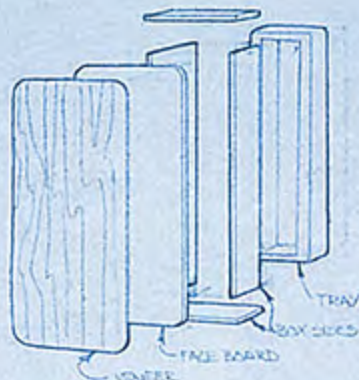




CHESAPEAKE BOX



CHESAPEAKE TRAY



BOX -

MATERIAL - 1/4" PLYWOOD - DYED BLACK
 - WALNUT VENEER - UNSEED OIL FINISH
 PROCESS - CUT - GWE - TIGHTRAID LEMENT
 DYE BLACK, NOT STAINED
 APPLY VENEER

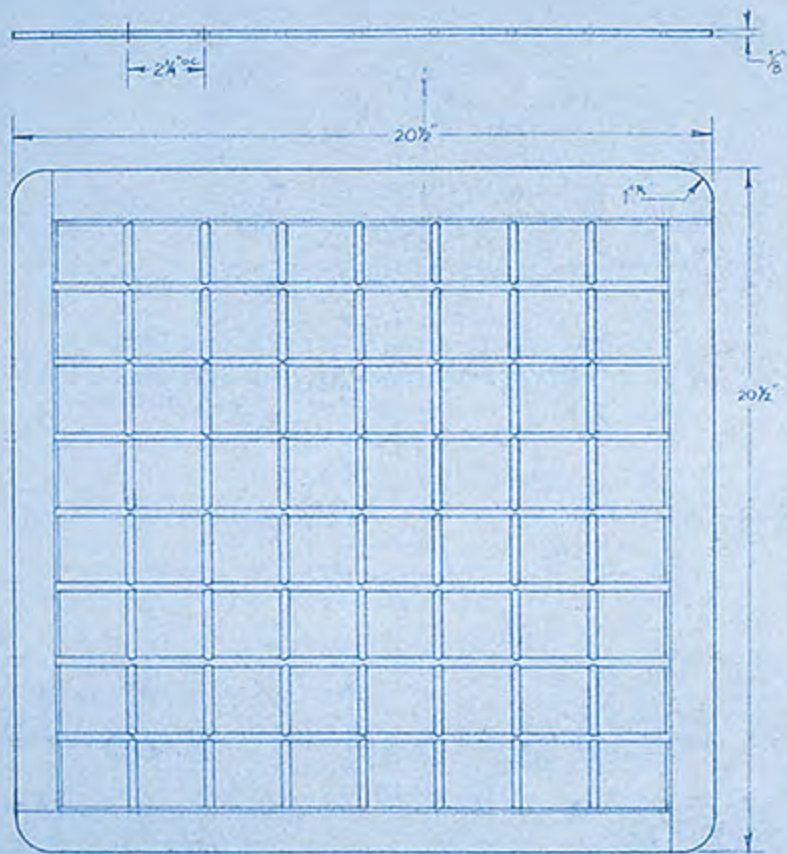
TRAY -

MATERIAL - 0.030" WHITE SHEET SOREVEL
 PROCESS - VACUUM-FORMING

CHESAPEAKE BOX AND TRAY

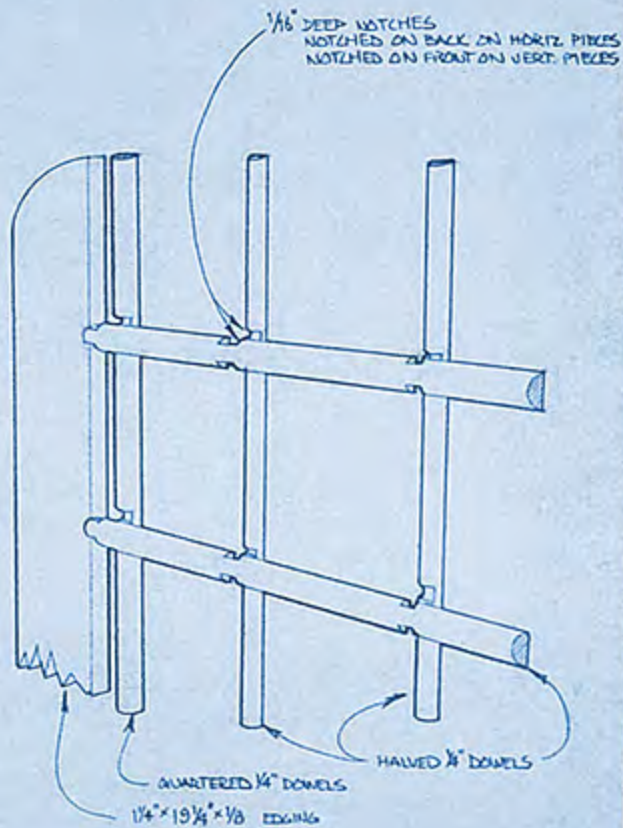
STAR I CENTER
 05/17/74 CALD - 1/2" 1"





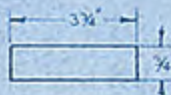
MATERIAL - $\frac{1}{8}$ " WOOD BORDER FRAME
 $\frac{1}{4}$ " DIA DOWELS

PROCESS - CUT AND NOTCH
 GLUE WITH EPOXY
 COAT WITH POLYURETHANE FINISH
 (IE WATER & HEAT RESISTANT)



CHESSBOARD SQUARE 316
 STAGE 1 CENTER
 08/17/74 SCALE - $\frac{1}{2}$ " = 1"

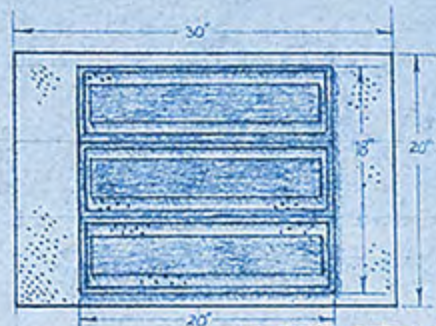




TRAY INTERIOR FRAME



TRAY IDENTIFICATION



MOLD FRAME LOCATION ON VACUUM FORM BED



TRIM LINE

MOLDED TRAY BEFORE TRIMMING

MATERIAL - PATTERN MAKERS PINE

PROCESS - CUT AND GLUE
SAND SMOOTH

CHESTER TRAY JIG

STAK I CENTER

08/17/74

SCALE - 1/2" = 1"

